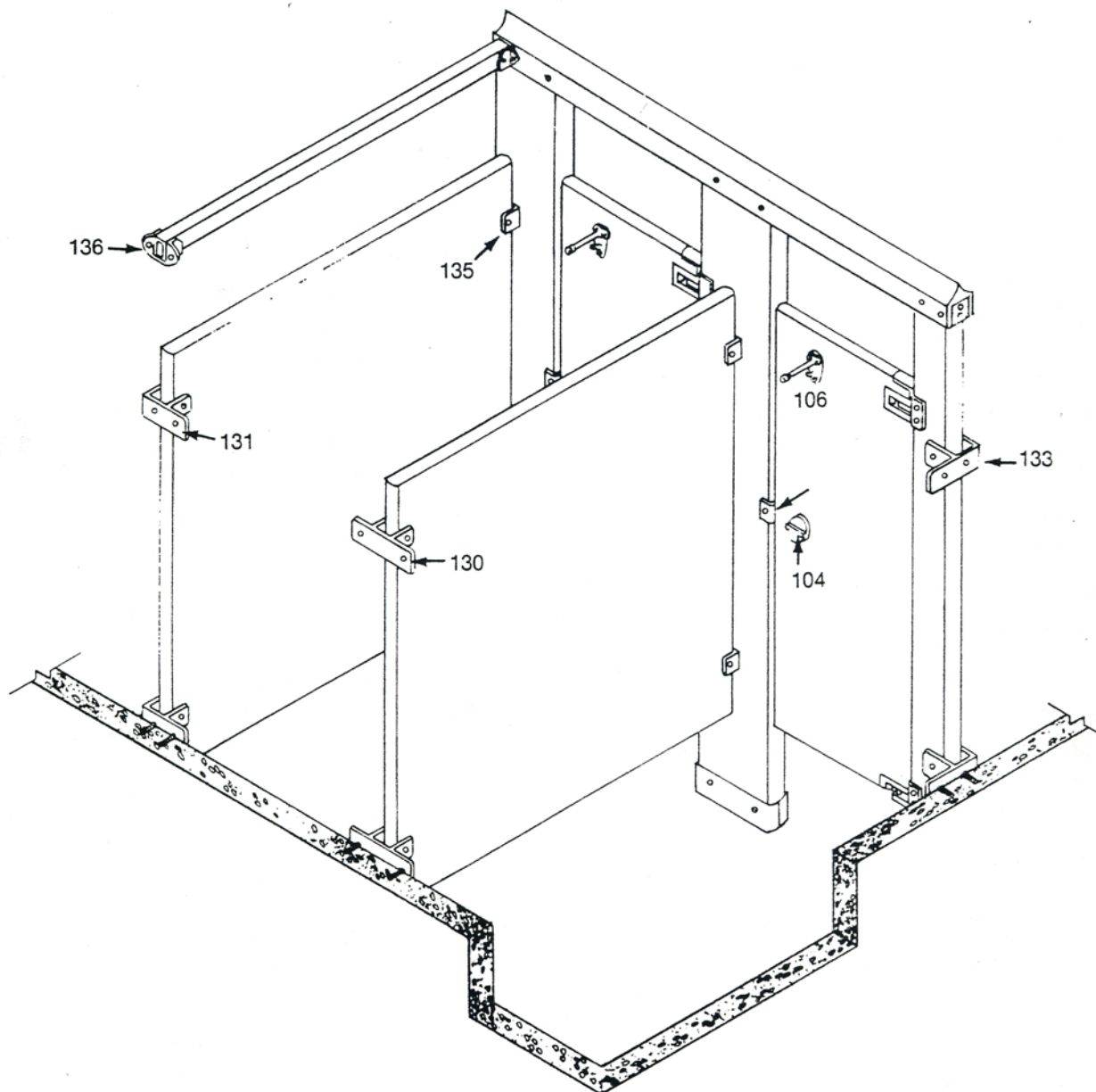


Baked Enamel Toilet Partitions Installation Instructions



IMPORTANT!

- * PLEASE READ ALL INSTRUCTIONS AND STUDY DRAWING BEFORE BEGINNING.
- * VERIFY ALL DIMENSIONS ON JOB PRINTS WITH ACTUAL JOB CONDITIONS.
- * UNLESS SPECIFICALLY NOTED ALL PANELS ARE TO BE MOUNTED 12" OFF FLOOR.
- * BE SURE ALL PILASTERS ARE RIGHT SIDE UP.
- * UNLESS JOB PRINT STATES "THRU-BOLTS AND VANDAL HEAD SCREWS" YOU HAVE BEEN GIVEN PREPACKAGED KITS WITH #14 x 1/2" SHEET METAL SCREWS, THRU-BOLTS ARE TO THEN BE USED ONLY ON THE DOOR HARDWARE.

INSTALLATION INSTRUCTIONS

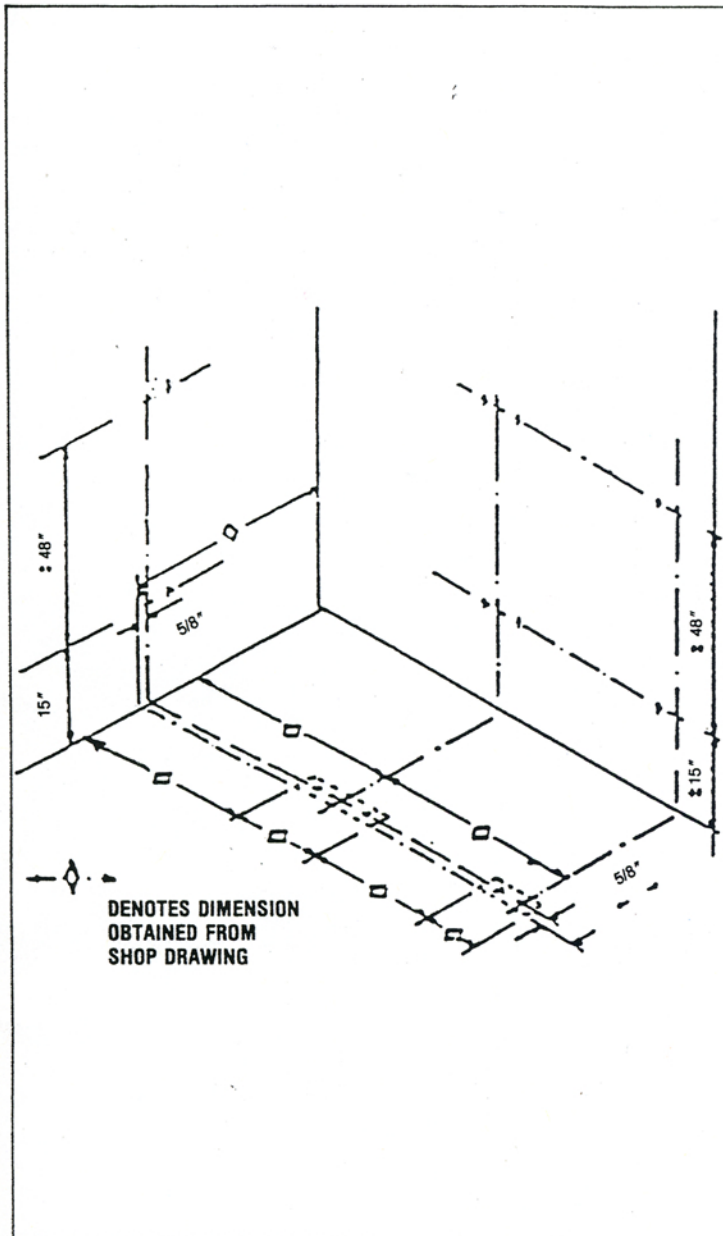


FIGURE 1

LAYOUT & MOUNTING BRACKETS

- A) Establish & mark center of pilaster location from back wall. Measure out at each end of installation.
- B) Establish & mark center lines of all top & bottom wall brackets. If possible locate in joints.
- C) From side wall & center of pilaster location, measure dimensions for floor fastenings according to shop drawings & mark. Center line of floor fastenings to be located 1 1/8" in from each edge of pilaster.
- D) Mark all bracket holes to be drilled using brackets as drilling templates.
- E) Drill 5/16" holes for wall brackets.
- F) Drill holes for floor fastenings. 5/16" for H/B, 3/4" for F/S.
- G) Insert plastic anchors into all holes.
- H) Secure wall brackets with 14 x 1 1/4" screws.

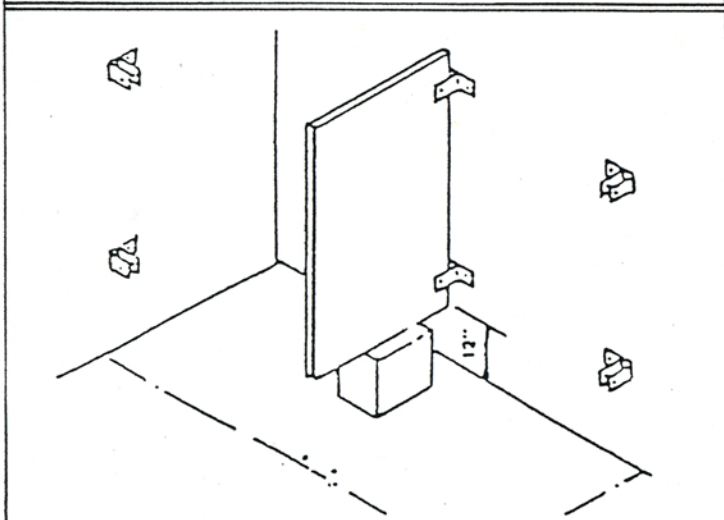


FIGURE 2

POSITION PANEL — ALL TYPES

- A) Place some type of support (12" high) in position to hold panel.
- B) Set panel on support and into wall brackets. Do not fasten panel to wall brackets.

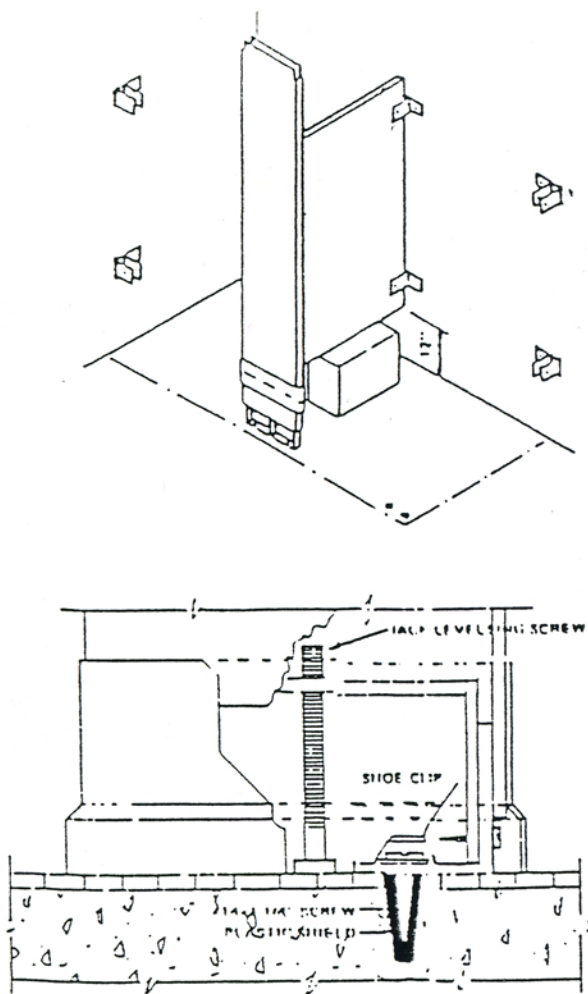


FIGURE 3

ATTACH PILASTER — TYPE H/B
(Headrail Braced)

- A) Place plastic anchors into floor holes.
- B) Over each floor anchor, place in the following order:
Shoe clip and (1) "L" bracket & fasten into anchor with #14x1/4" Phillips Heat sheet metal screw.
- C) Fasten "U" brackets to pilasters at pre-drilled locations with #14x1/4" P.H. sheet metal screws.
- D) Put stainless steel shoe on pilaster.
- E) Place pilaster over "L" brackets. Fasten with one #14x1/2" P.H. sheet metal screw at each side.
- F) Fasten "U" brackets to panel pre-drilled locations with #14x1/2" P.H. sheet metal screws.
- G) Plumb pilaster, place wedge at top rear between panel and wall. Remove panel support.
- H) Repeat for each pilaster.

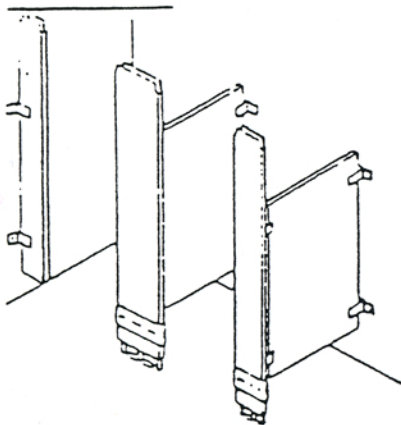


FIGURE 4

SET DOOR OPENINGS — ALL TYPES

- A) Position wall pilaster - plumb & secure
- B) Using wall pilaster as reference point, position each pilaster to required door opening and secure.
- C) Drill 11/64 holes and secure panels to wall bracket with #14x1/2" sheet metal screws.

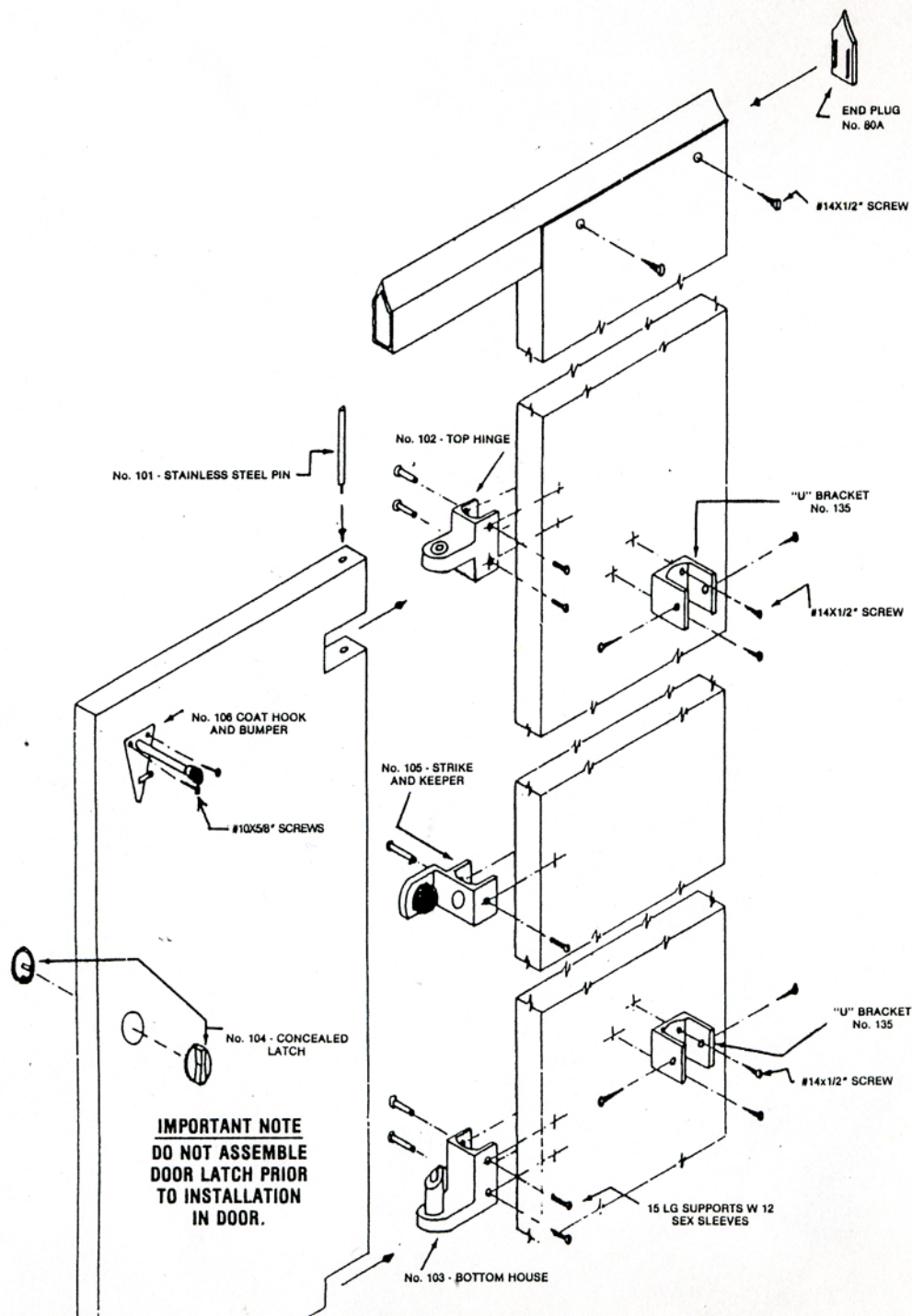


FIGURE 5

HEADRAIL & HEADRAIL BRACKETS

- A) Level headrail in notched slots in pilasters from one compartment to the next. Tighten height adjustment screws at bottoms of pilaster.
- B) Drill $11/64$ holes and fasten headrail to pilaster with $\#14 \times 1/2$ " sheet metal screws.
- C) Drill $11/64$ holes and attach "U" bracket to end pilaster with $\#14 \times 1/2$ " sheet metal screws.
- D) Drill $5/16$ " holes in wall, insert Plastic anchor and secure headrail wall bracket with $\#14 \times 1/2$ " sheet metal screws.
- E) Place headrail into brackets and secure with $\#14 \times 1/2$ " sheet metal screws.

HANG DOORS & ACCESSORIES — ALL TYPES

- A) Refer to Fig. 6 for hanging of doors and attachment of accessories.
- B) Touch up as required.